

Injury and Trauma Network:

Making the WA Community Safer

Gail McGowan – *Director, Policy & Education of the WorkSafe division
of the Department of Consumer and Employment Protection WA*

Overview

- What is the network and why was it established?
- The importance of engaging stakeholders and the need for co-operation, co-ordination and integration of services
- The work program and strategic directions for the network
- Injury and trauma in WA
- WorkSafe as a member of the network
- Work-related injury in WA
- Need for prevention

Injury and Trauma Network

- Recommended by the Health Reform Implementation Taskforce
- Provides focus across all clinical disciplines towards
 - The prevention of illness and injury
 - The maintenance of health
 - No 1 Priority = Patient focussed care

Importance of Engaging Stakeholders, and the Need for Co-Operation, Co-ordination and Integration of Services

- Common theme from November 2006 workshop report and stakeholder feedback
- Respective roles and responsibilities are not always well understood
 - Can lead to duplication of services or ‘gaps’ in service delivery

A Snapshot of Injury and Trauma in WA

- Data from Injury and Trauma Workshop report 2006
- When combined with the number one barrier from two non-clinical scenarios, the major themes are:
 - Coordination and integration of services
 - Workforce training
 - Research and data
 - Injury prevention

The Work Program



Models of Care Under Development

■ Model of Care for Burns:

- Prevention
- Acute care management
- Mental health and psychosocial issues
- Rehabilitation and reconstruction
- Education and training → workforce

■ Framework for Non-Major Trauma:

- In early stages of development

Data Groups

- Outcomes are to inform planning, development, expansion and opportunities to improve data sources and information systems that support research in injury and trauma in WA

Trauma Education Committee

- To develop, deliver and evaluate training programmes throughout WA which provide educational opportunities to all staff receiving and managing trauma patients
- Continue to establish the infrastructure to meet the trauma training needs of all health care professionals throughout WA
- Continue to evaluate and reassess the Clinical Health Goals and Targets set out by the Health Department of WA, and strive towards accomplishing these goals
- Address future education and training issues and recommendations made by the Health Reform Implementation Taskforce in relation to trauma care

Involvement of WorkSafe

- One of the groups represented within the network, along with others such as the Injury Control Council of WA, Office of Road Safety, Royal Flying Doctor Service and many more.

Work-Related Injuries in WA

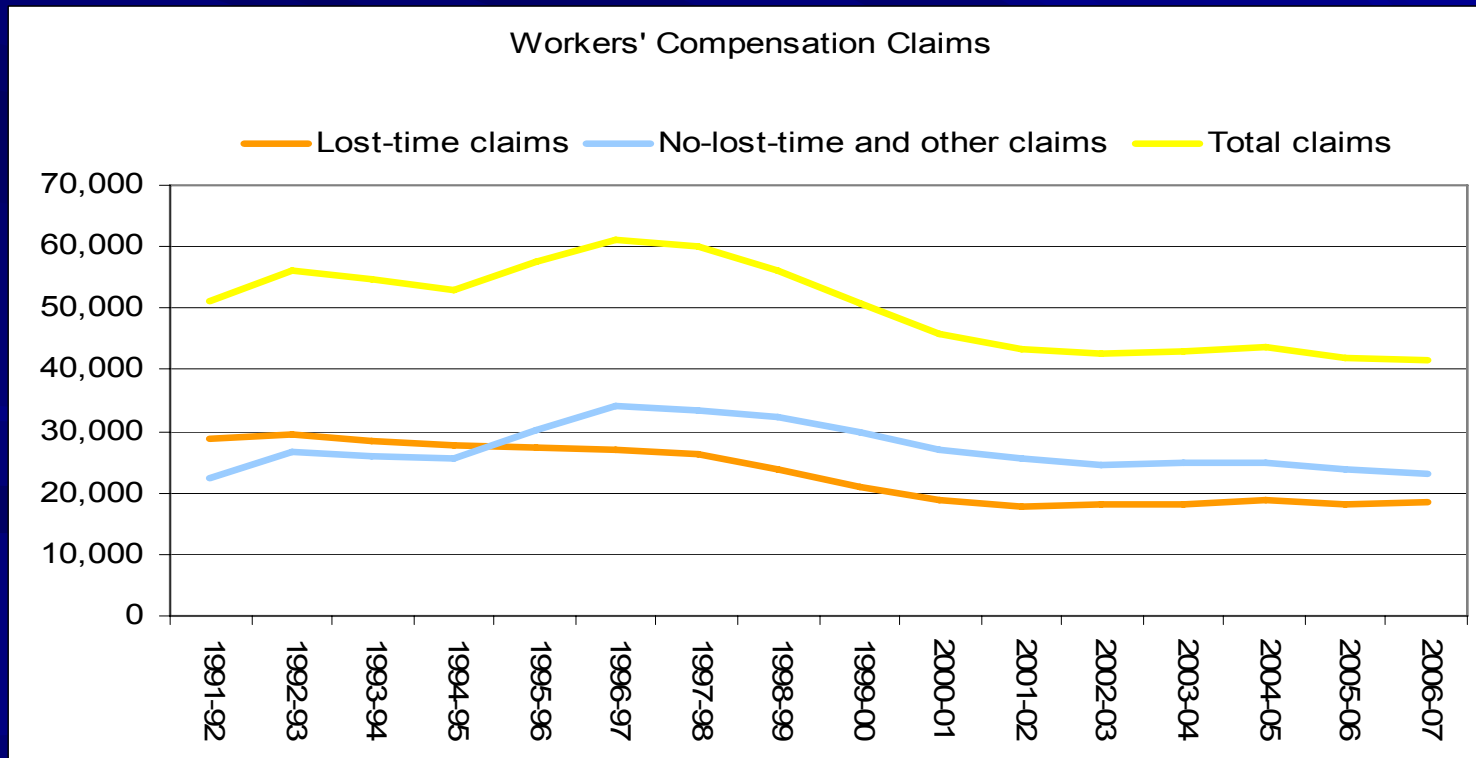
■ *Did you know....*

- 1 person is injured every thirty minutes seriously enough to take one or more days of shifts off work.
- That equates to 2.09 injuries per hour.
- On average a person is killed in WA as a result of a traumatic work related incident every 18 days (down from 19).
- 4,168 people being hurt each year to the extent that they require 60 or more days off work (the average being 260 days off).
- Male employees were 1.4 times more likely than female employees to have an accepted claim (11 claims for men per million hours worked by men compared with 8 claims for women per million hours worked by women).

•(Source: ASCC "Compendium of Workers Compensation Statistics 2004 to 2005")

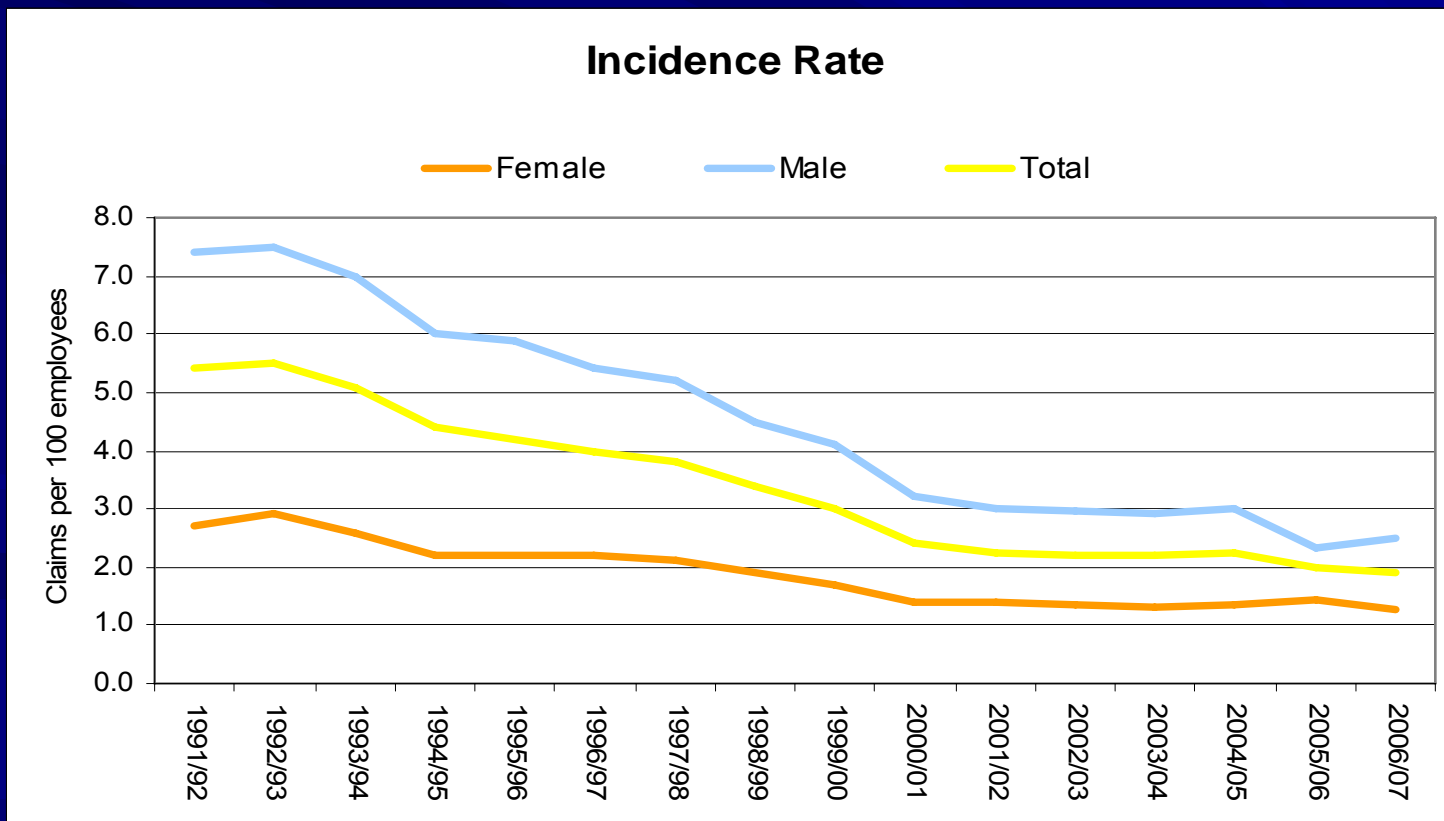
Claims

- 41,573 claims were lodged in 2006/07
- Lost time claims (one or more days/shifts absence from work) accounted for 44.3% (18,421)



Lost time Injuries and Diseases

- Work-related lost time injuries and diseases (LTIDs) in Western Australia Incidence Rates 1991/92 to 2006/07



National OHS Strategy 2002-2012

■ Five national priorities

- reduce high incidence/severity risks
- develop the capacity of business operators and workers to manage OHS effectively
- eliminate hazards at the design stage
- strengthen the capacity of government to influence OHS outcomes

Exposure to Hazard Summary

Hazard	% Exposed	Top 3 preventative measures taken	Industries Where Hazards Commonly Exist
Direct sunlight	38% exposed	1. Hats – 69% 2. Sunscreen – 67% 3. Protective clothing – 65% Did nothing – 14%	<ul style="list-style-type: none"> ■ Construction ■ Agriculture, Forestry and Fishing
Loud Noise	41% exposed	1. Ear plugs – 69% 2. Ear muffs – 65% 3. Training – 44% Did nothing – 13%	<ul style="list-style-type: none"> ■ Manufacturing ■ Construction
Vibrating Tools, Equipment or Vehicles	41% exposed	1. Gloves – 68% 2. Vibration absorbing seats – 31% 3. Products with less vibration - 30% Did nothing – 20%	<ul style="list-style-type: none"> ■ Agriculture, Forestry & Fishing ■ Construction

Exposure to Hazards Summary

Cont'd

Hazard	% Exposed	Top 3 Preventative Measures Taken	Industries Where Hazards Commonly Exist
Dust	46% exposed	1. Masks – 65% 2. Reduce time spent in dusty environment – 43% 3. Ventilation – 39% Did nothing – 23%	Construction
Gases, Vapours, Smoke or Fumes	27% exposed	1. Ventilation systems – 59% 2. Masks – 55% 3. Reduce time spent in environment where there are gases, vapours – 38% Did nothing – 22%	Manufacturing

Exposure to Hazards Summary

Cont'd

Hazard	% Exposed	Top 3 Preventative Measures Taken	Industries Where Hazards Commonly Exist
Biological Materials	24% exposed	1. Gloves – 87% 2. Protective clothing – 70% 3. Training – 70% Did nothing – 10%	<ul style="list-style-type: none"> ■ Health & Community Care Services ■ Agriculture, Forestry & Fishing
Wet Work	30% exposed	1. Gloves – 78% 2. Labelling and warning signs – 54% 3. Barrier creams – 49% Did nothing – 12%	<ul style="list-style-type: none"> ■ Agriculture, Forestry & Fishing ■ Health & Community Care Services

Exposure to Hazards Summary

Cont'd

Hazard	% Exposed	Top 3 Preventative Measures Taken	Industries Where Hazards Commonly Exist
Chemical Substances	43% exposed	1. Gloves – 86% 2. Protective clothing – 64% 3. Labelling and warning signs – 71% Did nothing – 6%	<ul style="list-style-type: none"> ■ Construction ■ Agriculture, Forestry & fishing ■ Health & community Care Services

Work Related Injury: Cost to the Australian Community

- \$34.3 billion – economic cost of illness and injury (5% of GDP)
- \$7.5 billion – workers compensation
- \$48.5 billion - a dollar cost of pain, suffering and early death

(Paid by employers, workers, society)