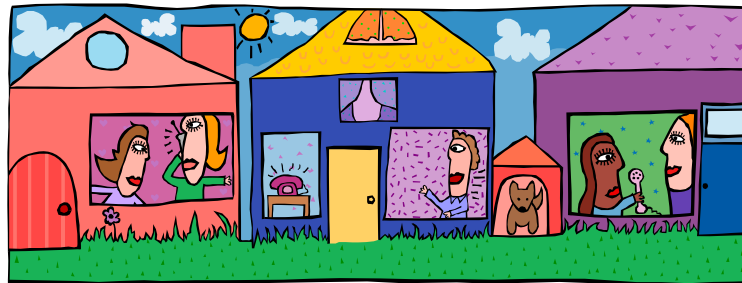


A Community Action Kit for Home Safety



A Guide for Health Professionals and Community Groups

Presented by:

Melita Leeds, Program Manager
Kidsafe WA

Background

- Designed by Kidsafe WA in consultation with health professionals
- Guide to support health professionals and other organisations who work with parents of young children
- Provide consistent child safety messages

Background

- Developed for use by:
 - Health Professionals
 - Schools
 - Playgroups
 - Child care workers
 - Leaders of community groups
- Provides information, strategies and resources
- Work towards reducing incidence and severity of home based injuries for children within their community



Why is Child Injury Prevention Important?

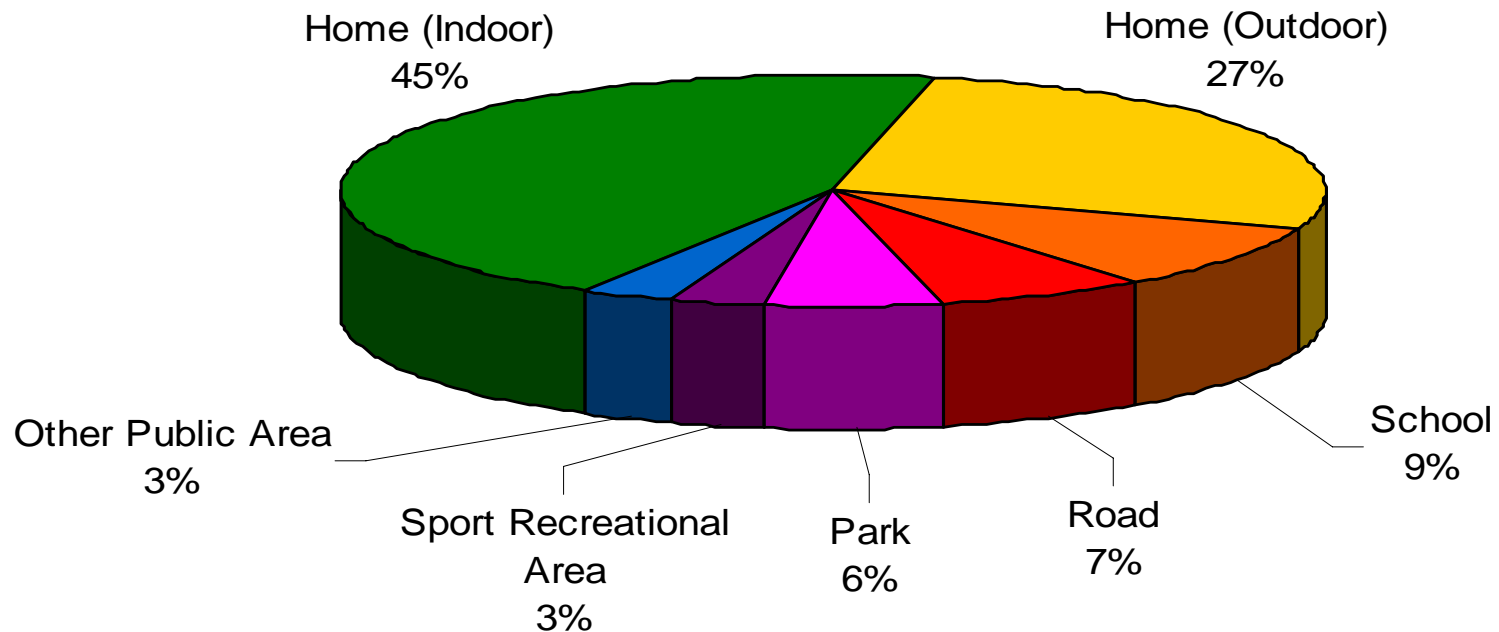
- Each year in WA:
 - 50 children < 15 years will die
 - 8,000 will be admitted to hospital
 - 11,000 will present at the Emergency Department at PMH

As a result of an injury



- The majority will be under 5 years of age

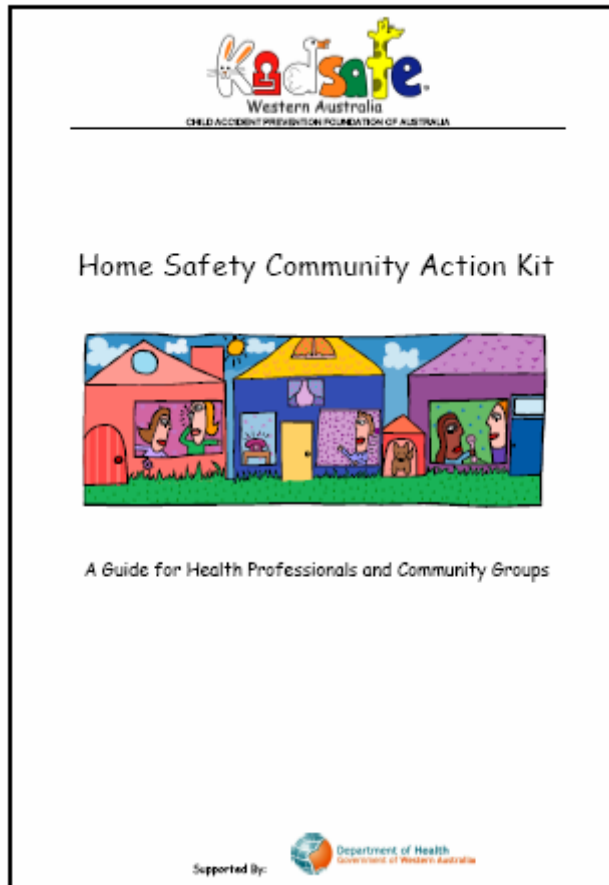
Why focus on “Home” injuries?



Source: Hospital Morbidity Data System, 2002. (1512_rm) Hospital Separations 2000-01 children <15 years.

Inside the Kit

- Background on Kidsafe WA & its services
- How to Use this Resource
- Section One: Injury & Prevention
- Section Two: Community & Parent Workshop



Section One

- Major Types of Injuries in the Home
- Injury Risks by Stage of Child Development
- Child Injury Prevention by Location within the home
- Community Activities – How to Get Started
- Appendices
- Resources



Home Safety Community Action Kit: A Guide for Health Professionals



LAUNDRY

General Prevention Tips

- Fit a moveable barrier across entry point(s) to keep small children from entering laundry.
- Ensure front loading washers and clothes dryers are secured when not in use or installed high to prevent children from climbing into the appliance.
- Install a slow, self closing springs on all doors leading to outside play areas.

Drowning Prevention Tips

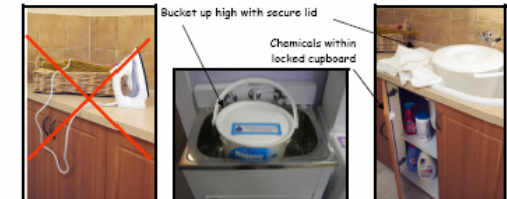
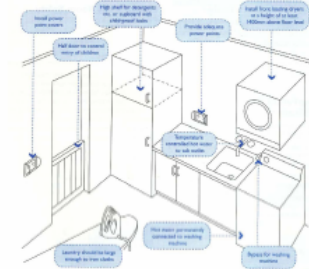
- Always drain the water from nappy buckets and washing machines when not in use and ensure nappy buckets have a firm lid and are stored up high. A child can drown in a little as 5cm of water.

Poisoning Prevention Tips

- Fit all laundry cupboards with child resistant locks for safe storage of washing powder and cleaning chemicals.

Burns/Scalds Prevention Tips

- Allocate a space in the laundry for ironing and provide safe storage for hot irons after use.
- Ensure water temperature does not exceed 50°C in hot water outlets. The delivery temperature of hot water can be regulated by Thermostatic mixing valves or tempering valves. Consult your local plumber for the options best suited to your system.
- Fit top covers to the hot water taps in the laundry.



List of Resources included

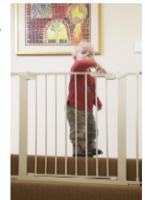
- Kidsafe WA Home Safety Resources
- Safety Product & Resource Order Form
- Permission to Copy Form
- Other Agencies Resources
- Posters
- Local Contacts & Useful Websites
- Suggestions for making your own Safety Product Display box

Section Two

- Presenters Notes
- Professional Workshop Plan
- Session Evaluation Form
- Frequently Asked Questions
- Home Child Injury Case Studies
- Presentation (printed & on CD)
- Injury Prevention in the Home DVD

8 Key Features for a Safer Home

- **Pools (and spas)** - that are fully fenced, with well maintained, self-closed gates.
- **Hot water** from bathroom taps a set at a delivery temperature of 50°C.
- **Barriers** such as gates on stairs and fireguards in place to keep children away from hazards.
- Install **electrical safety switches and safety plugs** to reduce the risk of electrocution .



Information provided by



8 Key Features for a Safer Home...



- **Child resistant** catches fitted to cupboards where dangers like medicines, cleaners, matches and lighters are stored.



- Install **smoke alarms** test them regularly and change the battery once a year.
- **Play areas** fenced off from the street and the driveway.



- Ensure all top heavy furniture such as bookcases are **secured to the wall**.

Information provided by



Evaluation

- Pilot Testing:
 - Oceanic Health Region
 - 12 Child Health Nurses
 - Pilbara Region: Linked with Pilbara Iron project
 - 10 Kits distributed
 - Induction prior to Pilot
 - Feedback to participants following collation of results

Results

- All participants acknowledged:
 - Met their expectations
 - Found useful
 - Information in logical order
 - Suggestion of other topics for inclusion
- Most commonly used sections:
 - Section 1: Major types of injuries in the home
 - Section 2: Injury risks by stage of development
 - Section 3: Child Injury Prevention by location
 - Section 4: Resources

Results

- Major Issues/Suggestions:
 - DVD: at time no DVD or Powerpoint Facilities
 - Web Access: Preferred to receive Kit as a printed resource
 - Presentation Materials: Visual prints rather than Powerpoint Presentation
 - More data and cultural relevance

Distribution

- All Pilot Participants received a complimentary kit
- Kits can be purchased at a cost of \$50
- Child and Adolescent Community Health contribution and plan
 - Professional Development Sessions
 - Initial purchase of 60 (only 4 to South West)
 - Planning to have one in every child health centre in State this year

Updates

- All kit holders to return “Registration Form”
- Updates provided in Three Ways:
 - Online Secure Website:
www.kidsafewa.com.au/cipn
 - Printed Updates
 - E-mail/Postal Alerts

Where to from Here?

- Aboriginal Supplement
- Coordination of Additional Resource Distribution
- Finalise Kit holder register
- Development of Poster presentation series
- Distribution of Baby's First Year DVD

Where to from Here?

- Launch of
Online Safety
Demonstration
House:
July 2008



safetydemo house
welcome



Welcome to the Kidsafe WA online Safety Demo House. Use your mouse to visit a room by clicking on the 'i' and then 'enter' in the pop-up box.

For further information please contact Kidsafe WA at info@kidsafewa.com.au

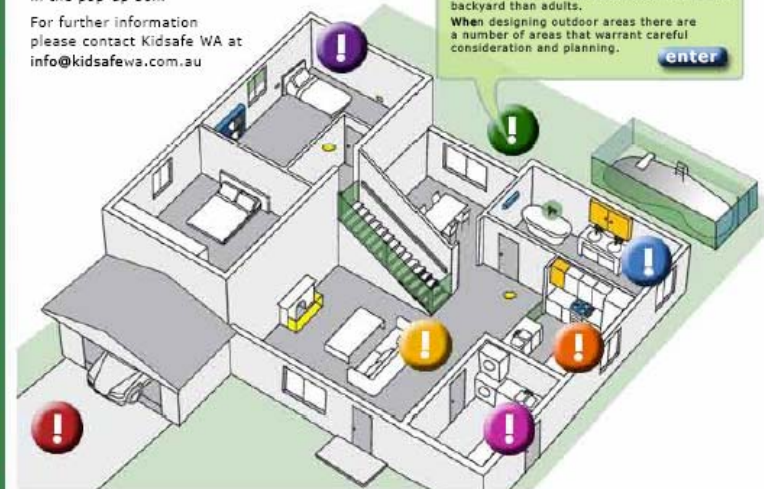


Backyard

Like many places inside our homes, outdoor areas are usually designed to meet adults' needs. They often aren't made with children in mind, yet children will spend more time in the backyard than adults.

When designing outdoor areas there are a number of areas that warrant careful consideration and planning.

enter



Acknowledgements

- Oceanic Health Region & Pilbara:
 - Child Health Nurses & Other Health Professionals



Department of Health
Government of Western Australia



Department of Health
Government of Western Australia

Child and Adolescent Health Service